



PIX

Power Transmission Solutions

Driving growth!

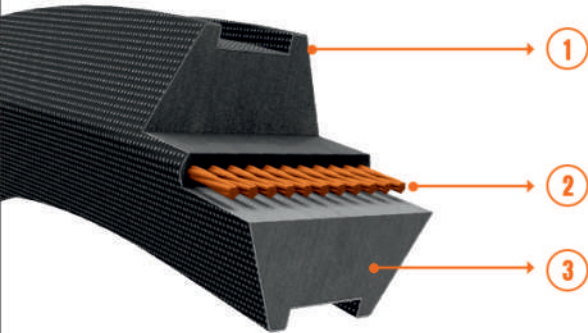
PIX-Duo[®]-XS

Twin-power, Hexagonal Wrap Belts



Features

- Enhanced product life
- Transmits power from both sides of the Belt
- Centre cords provide excellent power transmission at low-stretch
- Special design provides excellent flexibility for serpentine drives
- Temperature range: -18°C to +80°C



Construction Details

1. Wear-resistant bias-cut neoprene rubberised polyester cotton fabric
2. High tenacity, low stretch tension member
3. High modulus compression rubber

Reference Standards

IS 11038-1984

Product Range

Section	Top Width (mm)	Thickness (mm)	Angle (Degree)	Min. Pulley Diameter (mm)	Manufacturing Range		Length Designation
					Min.	Max.	
AA	13	10	40	80	46"	254"	Le
BB	17	14	40	125	40"	924"	Le
CC	22	17	40	224	73"	924"	Le
25	25	22	40	280	88"	925"	Le
DD	32	25	40	355	158"	900"	Le

Note - Intermediate sizes are available upon request

Applications

Rice mills, husker machines, serpentine drives, poultry feather-pickers, dyeing units, etc.

AIFDAJZ097/Dec 2012/300



pixtrans



pixtransmission



pix-group



pixtrans

www.pixtrans.com