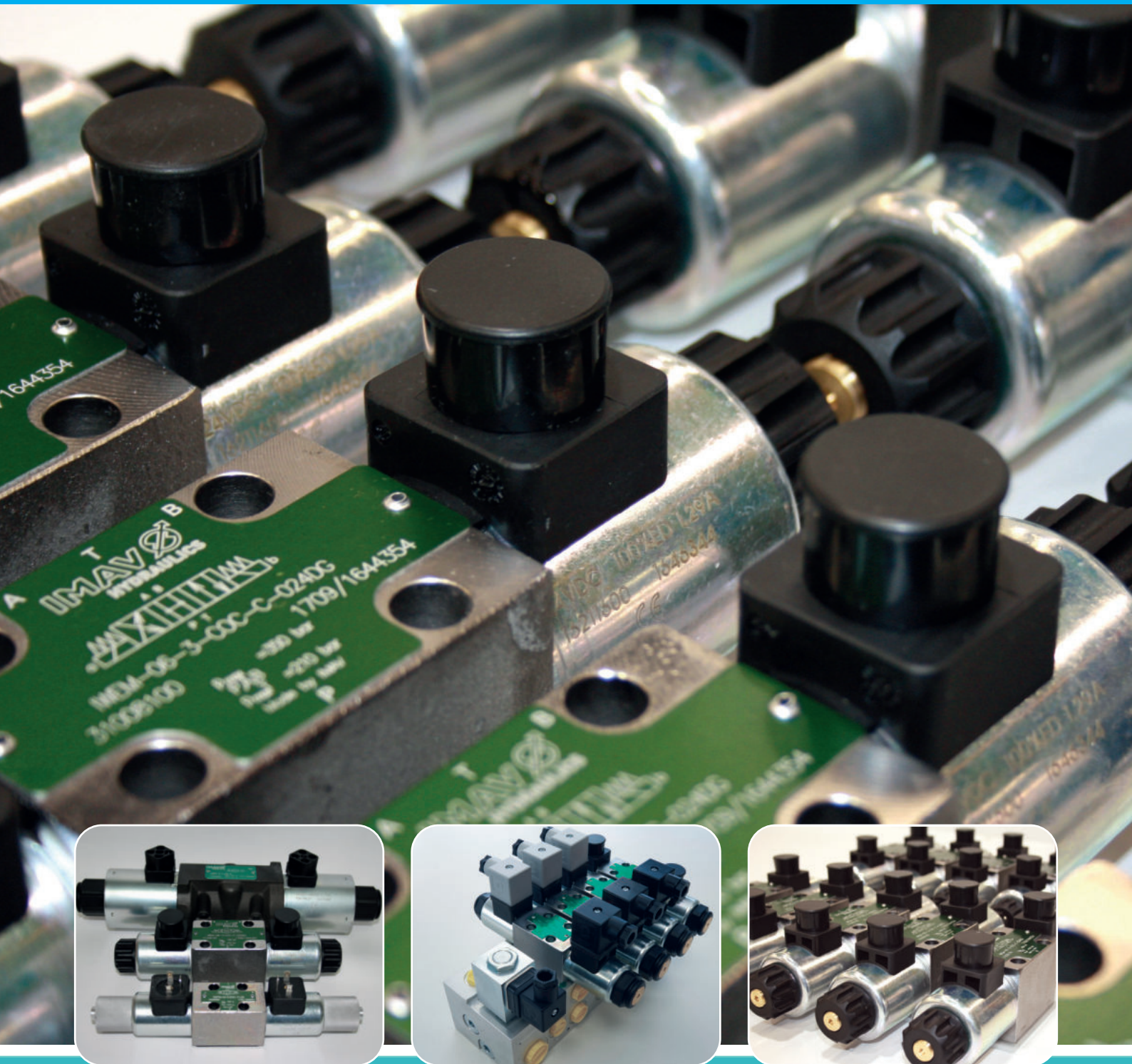


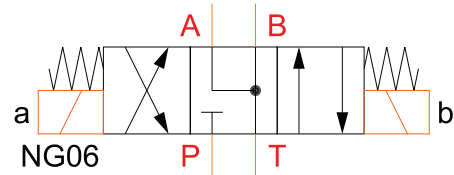
IMAV - Directional Control Valves



Powered by experts!

Series IWEM

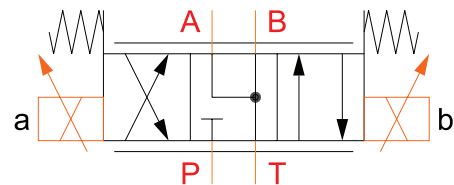
- 4/2 and 4/3 directional spool valves with electromagnetic operation
- Sizes NG4, 6 and 10
- Actuating magnet adjustable at will
- 5-chamber-directional control valve (size NG06 and 10)
- Emergency manual operation
- Connecting dimensions acc. to DIN 24340 / ISO 4401



Type	Qmax	Pmax	Connection
IWEM-04	30	320	NG04 / CETOP 2
IWEM-06	80	350	NG06 / CETOP 3
IWEM-10	140	350	NG10 / CETOP 5

Series IWPM

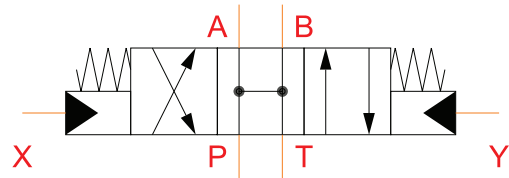
- 4/2 and 4/3 - proportional directional control valve
- Sizes NG4, 6 and 10
- Compact design with integrated electronics
- High reliability
- Constant control in both flow directions
- Simple exchangeability of the coils incl. electronics
- Connecting dimensions acc. to DIN 24340 / ISO 4401



Type	Qmax	Pmax	Connection
IWPM-04	12	320	NG04 / CETOP 2
IWPM-06	30	350	NG06 / CETOP 3
IWPM-10	60	350	NG10 / CETOP 5

Series IWHY

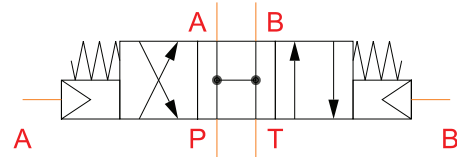
- 4/2 and 4/3 directional spool valves
- Hydraulically operated
- Size NG6
- 3 chamber directional control valve
- Modular setup
- Connection dimensions acc.to DIN 24340 / ISO 4401



Type	Qmax	Pmax	Connection
IWHY-06	80	350	NG06 / CETOP 3

Series IWPN

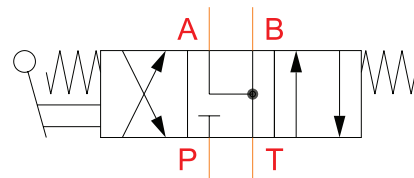
- 4/2 and 4/3 directional spool valves
- Pneumatically operated
- Size NG6
- 3 chamber directional control valve
- Modular setup
- Connection dimensions acc.to DIN 24340 / ISO 4401



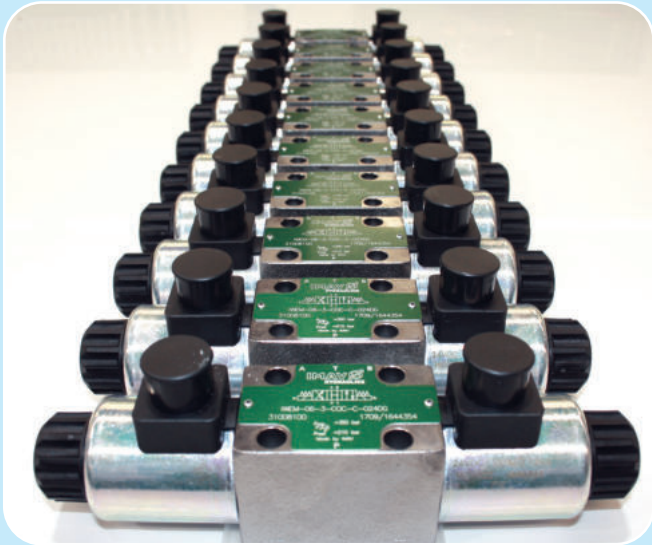
Type	Qmax	Pmax	Connection
IWPN-06	80	350	NG06 / CETOP 3

Series IWHH

- 4/2 and 4/3 directional spool valves
- Hand lever actuation
- Sizes NG4 and 6
- Actuation can be relocated by 90°
- Connection dimensions acc.to DIN 24340 / ISO 4401



Type	Qmax	Pmax	Connection
IWHH-04	30	320	NG04 / CETOP 2
IWHH-06	80	350	NG06 / CETOP 3



IMAV - CETOP-Valves

- Electromagnetic and proportional directional control valves in sizes 4, 6 and 10
- Manually operated directional control valves in sizes 4 and 6
- Hydraulic, pneumatic and roller operated directional control valves
- Max. operating pressure up to 350 bar
- For mobile and stationary application
- Short-term availability from stock

Components from our System Partners

Additionally to the IMAV-directional control valve delivery programme we offer valve technology from our long-term System Partners Eaton Hydraulics and Argo Hytos as well as other renowned valve manufacturers from stock.




Powered by experts!