

PRODUCT RANGE



# NATURAL WOOD COATINGS

---

FOR INDUSTRY AND RETAIL  
PRIVATE LABEL SOLUTIONS



A can of blue paint with a yellow handle and blue head paintbrush resting on a wooden surface. The can has a label that reads "IHR LOGO" and "Bangkirai-Öl".

# Private Label

exclusive private label  
with added value

- individualized according to your CI
- exclusive brand image
- image transfer

[www.pnz.de](http://www.pnz.de)



### Premium Trademark

High-caliber products from a renowned manufacturer with an individual, attractive look in accordance with your Corporate Identity. This holistic concept allows you to offer your customers an integrated service under your own name while additionally benefiting from accurately targeted advertising, improved customer retention, a higher sales margins and a product range with very unique selling points, especially when compared to discount stores and internet trade.

### Alongside a reliable partner

PNZ-Produkte GmbH is one of the leading European manufacturers of ecological wood finishing products under its own brand. In particular we offer:

- A product range tuned to your requirements and customer topology
- Fair terms for the trade partner
- Professional and quick turnaround by our inhouse marketing team
- Service and support

### As versatile as nature itself

We specially develop treatments for a variety of woods and areas of application. As an ISO 9001 and 14001 certified enterprise we work to achieve the highest standards of quality. Various external certifications complete the picture and give you the safety to turn the love of wood into a lifelong love.

### Only the best is good enough

The prime quality of the natural ingredients guarantee the high quality of our products. And because every wood product and every area of application is unique, our formulations are specifically tailored to enhance their individual qualities. At the same time consumer and environmental protection are as close to our heart as is maximal safety of use.



DECK

6-9

DECK & CLADDING OIL  
END GRAIN WAX  
WOOD COLOR RESTORER  
ANTI-SLIP VARNISH

WPC & BPC

34-35

WPC-CLEANER  
WPC-IMPREGNATION  
WPC-STAIN REMOVER SPRAY  
WPC-INTENSIVE CLEANER

MORE FOR  
OUTDOORS

40-45

BAMBOO CARE OIL  
HARDWOOD CARE OIL  
TEAK-OIL  
UV-PROTECTION OIL  
LINSEED OIL VARNISH  
BEER TABLE BENCH VARNISH

FACADE

10-33

COVERING WOOD PAINT  
WOOD OIL VARNISH  
SINGLE COAT PAINT  
CLASSIC WOOD VARNISH  
HIGH SOLID WOOD VARNISH  
EXTRA  
SUPER COVERING VARNISH  
WOOD PROTECTION VARNISH HS  
WEATHER PROTECTION PAINT  
EXTERIOR OIL  
PROFESSIONAL SILICATE PAINT  
IMPREGNATION PRIMER W218  
IMPREGNATION PRIMER L118

CLEAN & CARE

36-39

PLASTIC CLEANER  
TEXTILE CLEANER  
TEXTILE IMPREGNATION  
GARDEN WOOD CLEANER  
BAMBOO CLEANER  
STONE CLEANER  
STONE IMPREGNATION  
REEN GROWTH REMOVER

FLOOR

46-53

HARDWAX OIL EVOLUTION  
HARDWAX OIL ORIGINAL  
HARDWAX OIL NATURE  
HARDWAX OIL EXPRESS  
HARDWAX OIL COLORED  
2K FLOOR LACQUER  
STAIR AND PARQUET VARNISH  
PARQUET CARE MATT

CHALKED  
PAINT

54-55

WALL PAINT

56-57

VINYL

58-61

VINYL-DAILY CARE  
VINYL-DAILY CLEAN  
VINYL-INTENSIVE CLEANER  
VINYL-REFRESHER  
VINYL-REPAIR  
VINYL WAX CAR

DECORATION

62-71

TRANSPARENT DECO WAX  
CREATIVE DECO WAX  
WOOD WAX W  
NATURAL COLOR OIL  
WOOD VARNISH

FURNITURE  
AND MORE

72-73

COUNTERTOP OIL  
ANTIQUE WAX  
CLEAR WAX  
BEESWAX BALM  
FURNITURE OIL

CLEAN & CARE

74-77

WAX CARE  
LAMINATE FLOOR CLEANER  
INTENSIVE CLEANER  
WOOD FLOOR SOA  
PARQUET CLEANER  
UNIVERSAL CLEANER  
CARE OIL  
WAX CARE  
PARQUET CARE  
CORK FLOOR CARE  
LAMINATE FLOOR CARE

MORE

78-79

PAINT STRIPPER  
BRUSH CLEANER/THINNER  
WOODWORM TREATMENT  
INSULATING PRIMER

CARE SETS

80-81

BIO-SERIES

81-83



# DECK & CLADDING OIL

## Preservation and protection for any deck wood

- Naturally tinted or pigmented for outdoors.
- Especially suitable for wooden decks and garden furniture.
- The satin surface is highly water-repellent. The pigmented products are UV-resistant.
- Needed coats, two coatings for untreated wood. Single refresher coat.
- Available in containers of 0.75 liters, 2.5 liters, 10 liters and 30 liters.
- 1 liter is enough for approximately 25 m<sup>2</sup> per application. Rough-sawn or corrugated wood can increase consumption by a factor of 2 or 3.

bright

Bangkirai-Oil

naturally tinted

Garapa-Oil

naturally tinted

Larch-Oil

grey

Deck-Oil

dark

Bangkirai-Oil

naturally tinted

Kapur-Oil

naturally tinted

Massaranduba-Oil

black

Deck-Oil

naturally tinted

Bangkirai-Oil

naturally tinted

Douglas fir-Oil

naturally tinted

Pine-Oil

naturally tinted

Thermowood-Oil

naturally tinted

Afri-Kulu-Oil

naturally tinted

Stone pine-Oil





# MORE FOR DECKS

## END GRAIN WAX

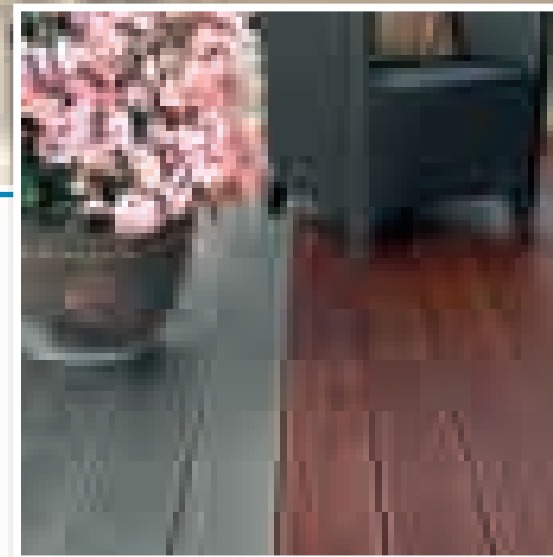
- Prevents seepage of wood components and possible cracking.
- Approximately 250 ml are enough for up to 400 end grains.

## WOOD COLOR RESTORER

- Restoration and cleaning of grayed wood outdoors.
- 1 liter is enough for approximately 10 – 50 m<sup>2</sup> depending on degree of soiling and dilution.

## ANTI-SLIP VARNISH

- Anti-slide for reducing the sliding hazard on any kind of wood.
- 1 liter is enough for approximately 7 – 10 m<sup>2</sup> per application. Rough-sawn or corrugated wood can increase consumption by a factor of 2.





# COVERING WOOD PAINT



## Long-lasting wood paint in several colors

- Covering, open-pore for outdoors.
- Especially suitable for wooden facades, balconies, windows, fences, pergolas, carports and garden furniture.
- Excellent weather protection.
- Needed coats, two coatings for untreated wood. Single refresher coat.
- Available in containers of 0.75 liters, 2.5 liter, 10 liters and 30 liters.
- 1 liter is enough for approximately 25 m<sup>2</sup> per application. Rough-sawn or corrugated wood can increase consumption by a factor of 2 or 3.

transparent

sunny yellow

carmine

medium brown

white

spruce-yellow

nordic red

nordic pine

ivory

pigeon blue

labrador

dark brown

pebble grey

turquoise

royale-blue

anthracite grey

light grey

grey-beige

cedar / red wood

black grey

traffic grey

stone grey



# WOOD OIL VARNISH

## Excellent, weather and UV-protection

- Varnishing, open-pore, long-term protection for outdoors.
- Especially suitable for windows, window shutters, garden houses, doors, fences, balconies, wooden decks and garden furniture.
- Water-repellent
- Needed coats: Two coats for untreated wood. For renewal one coat is enough.
- Available in containers of 0.75 liters, 2.5 liters, 10 liters and 30 liters.
- 1 liter is enough for approximately 25m<sup>2</sup> per application. Rough-sawn or corrugated wood can increase consumption by a factor of 2 or 3.



white	oak light	patina	quartz silver effect
transparent	larch	mahogany	graphite silver effect
pine	oak	chestnut	agate silver effect
stone pine	cedar	teak	onyx silver effect
basalt grey	ebony	rosewood	
walnut	nordic pine	gard green	



# SINGLE COAT PAINT

## Protection with just a single coat!

- Transparent, open-pore for indoors and outdoors.
- Especially suitable for windows, window shutters, garden houses, doors, fences, balconies and garden furniture.
- Excellent weather protection.
- Available in containers of 0.75 liters, 2.5 liters, 10 liters and 30 liters.
- 1 liter is enough for approximately 25 m<sup>2</sup> per application. Rough-sawn or corrugated wood can increase consumption by a factor of 2 or 3.



spruce white

oak

teak

rosewood

transparent

patina

mahogany

ebony

spruce natural

stone pine

walnut

hemlock

red cedar

scandinavian red

white poplar

larch

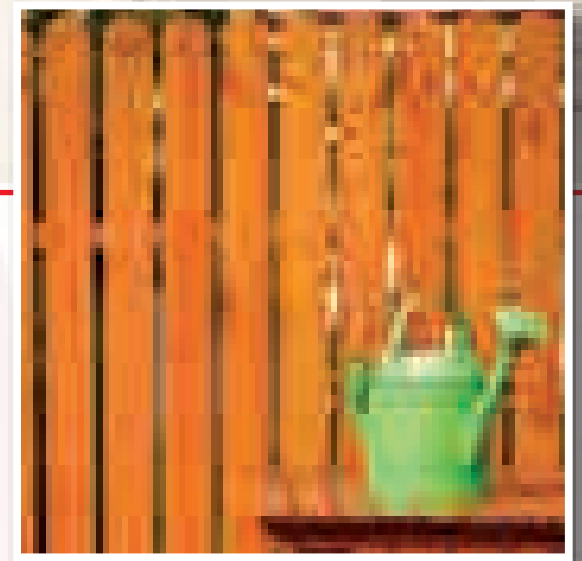
nordic pine



# CLASSIC WOOD VARNISH

**Saves time and material,  
easy to use!**

- Transparent, open-pore for outdoors.
- Especially suitable for log cabins, facade cladding, fences, windows and garden houses.
- Excellent, preserving weather protection.
- Needed coats, two to three coatings for untreated wood.
- Available in containers of 0.75 liters, 2.5 liters and 5 liters.
- 1 liter is enough for approximately 12 m<sup>2</sup> per application, Rough-sawn or corrugated wood can increase consumption by a factor of 2 or 3.



transparent

oak light

frisian blue

rosewood

birch white

oak

mahogany

juniper

light grey

stone pine

walnut

ebony

slate grey

larch

teak



# HIGH SOLID WOOD VARNISH

## Excellent weather protection available in several varnishing colors

- Water-repellent and open-pore for outdoors.
- Especially suitable for windows, window shutters, garden houses, facade cladding, timber framing, doors, fences, balconies and garden furniture.
- Excellent UV-protection.
- Available in containers of 0.75 liter, 2.5 liters, 10 liters and 30 liters.
- 1 liter is enough for approximately 12 m<sup>2</sup> per application. Rough-sawn or corrugated wood can increase consumption by a factor of 2 or 3.

transparent

grey

frisian blue

walnut

birch white

pine

rosewood

juniper

oak

larch

nordic red

black grey

light grayshale grey

mahogany

teak

ebony

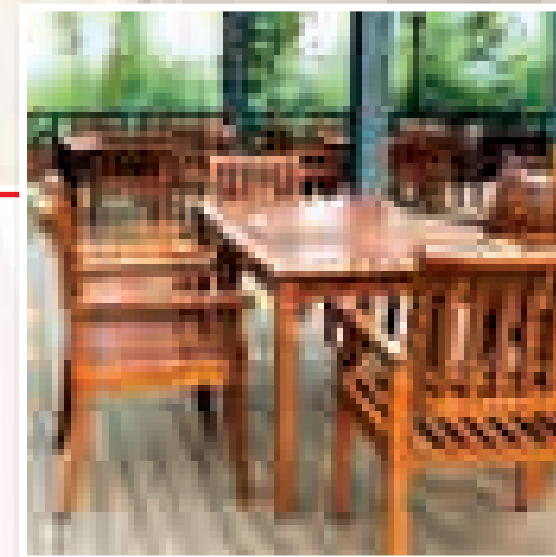
oak light





## Water-repellent paint available in several colors

- varnishing, open-pore for outdoors
- Especially suitable for facade cladding, balconies, windows, fences, doors and garden furniture.
- Intensive weather protection.
- Needed coats, two coatings for untreated wood. Single refresher coat.
- Available in containers of 0.75 liters and 2.5 liters.
- 1 liter is enough for approximately 12 m<sup>2</sup> per application. Rough-sawn or corrugated wood can increase consumption by a factor of 2 or 3.



transparent

oak light

mahogany

rosewood

birch white

stone pine

teak

ebony

oak

larch

walnut



# SUPER COVERING VARNISH

## Attractive covering paint

- Covering, moisture regulating for indoors and outdoors
- Especially suitable for facade cladding, balconies, windows, fences, doors and garden furniture.
- Long-term protection against UV-rays
- Needed coats: Two coats for untreated wood indoors, three coats for outdoors.
- Available in containers of 0.75 liters, 2.5 liters, 5 liters, 10 liters and 30 liters.
- 1 liter is enough for approximately 12 – 15 m<sup>2</sup> per application. Rough-sawn or corrugated wood can increase consumption by a factor of 2 or 3.

super white

sunny yellow

swedisch red

teak

sandy white

terracotta

mykonos blue

walnut

iceland grey

irish green

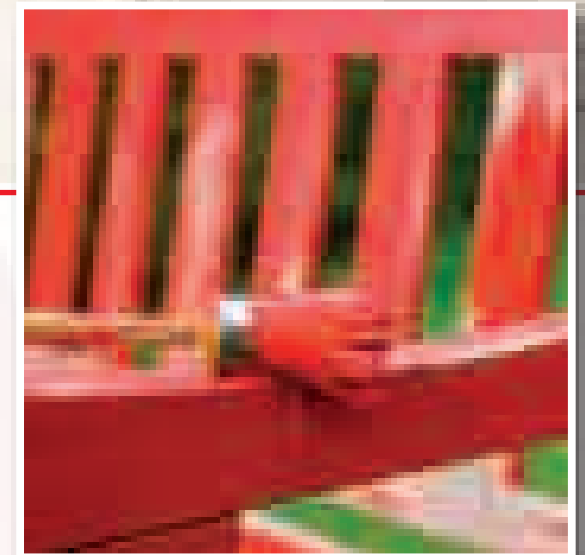
pigeon blue

ebony

sahara yellow

red

forest green

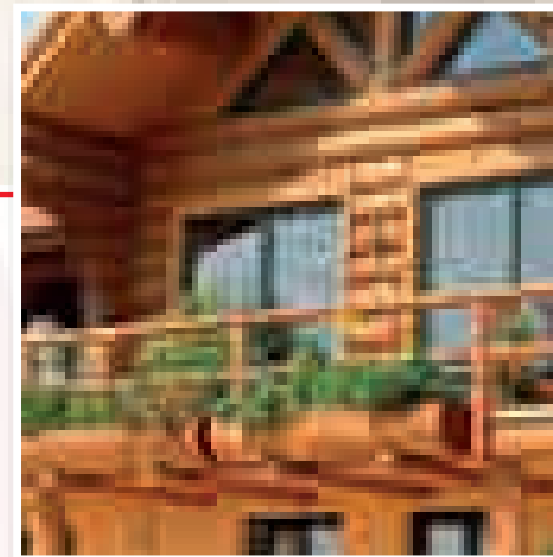




# WOOD PROTECTION VARNISH HS

**Transparent, water-repellent,  
open-pore, UV-resistant wood protection paint**

- Available as film predeciton or proper wood protection
- Very easy to use.
- Reliable UV-protection.
- Highly water-repellent.
- Preventive against blue stain, red and mold.
- Aavailable in containers of 0.75 liters, 2.5 liters and 5 liters.
- 1 liter is enough for approximately 10 m<sup>2</sup> per application. Rough-sawn or corrugated wood can increase consumption by a factor of 2 or 3.



**Available in 16 attractive colors with film protection.**

transparent*	white*	pine*	oak light*
stone pine*	walnut	rosewood	silvergrey*
hemlock	rustic oak	teak	chestnut
mahogany	salt green	nordic pine	ebony

\*also available with wood protection.



# WEATHER PROTECTION PAINT

**Long-term UV-protection  
available in several attractive colors**

- Weatherproof, highly water-repellent coat in attractive, covering colors, that offer long-term protection against UV-rays to treated surfaces.
- Available in containers of 0.75 liters, 2.5 liters, 10 liters and 30 liters.
- 1 liter is enough for approximately 12 – 15 m<sup>2</sup> per application. Rough-sawn or or corrugated wood can increase consumption by a factor of 2 or 3.

white

grey

swedish red

moss green

nordic yellow

pigeon blue

green

anthracite grey

yellow

blue

brown

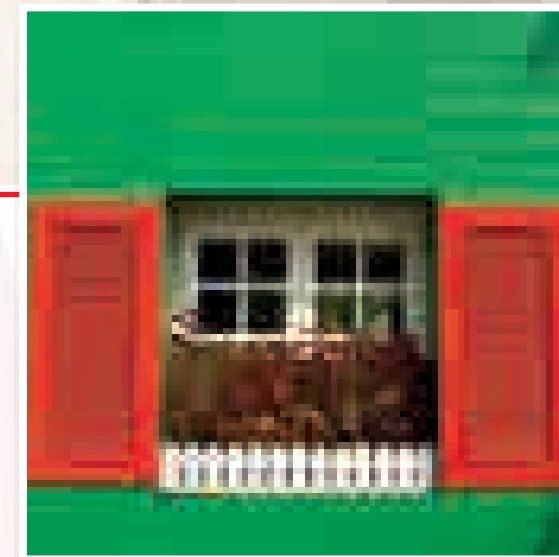
dark brown

silver gray

red

red brown

black

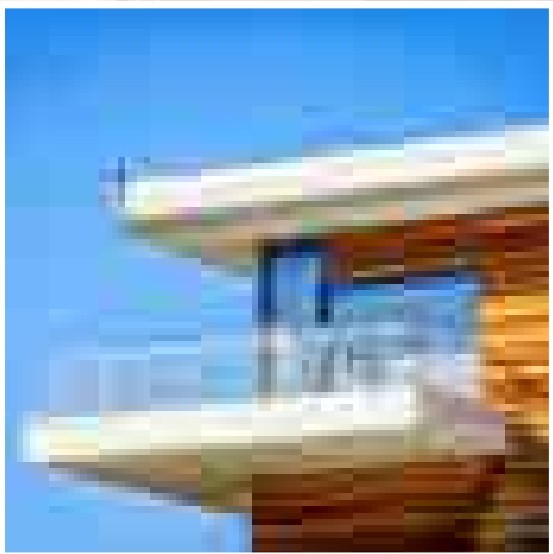




# EXTERIOR OIL

## Natural wood protection for outdoors

- For new and refresher coats for domestic and exotic wood (wooden decks, terraces, facade cladding, windows, doors, garden houses, timber framing, toys etc.).
- Protection against extreme climatic influences.
- Produces a highly water-repellent, weather and UV-resistant surface.
- Available in containers of 0.75 liters, 2.5 liters, 10 liters and 30 liters.
- 1 liter is enough for approximately 15 m<sup>2</sup> per application. Rough-sawn or corrugated wood can increase consumption by a factor of 2 or 3.



natural

larch

swiss pine

rosewood

opal white

cherry / chestnut

oak-olive

wenge

mahogany

gray-brown

blue-gray

blue

cherry effect

bronze effect

medium grey effect

dark grey effect

rosewood effect



# PROFI-SILIKAT- FASSADENFARBE

**Suitable for any facade outdoors**

- White satin
- Covers well
- Permeable to water vapor and CO<sub>2</sub>
- High contents of potassium water glass > 17%

- Universally usable on viable lime and cement plaster, concrete and brick. Also very well suited for thermal insulation composite system as well as weathered matt dispersion and silicone resin coats.
- The special ingredients form an inseparable microporous unity with the substrate. This so called silicification produces perfect adhesion even on critical or water-repellent surfaces and facades coated with artificial resin. This adhesion is extremely long-lasting and durable.





# IMPREGNATION

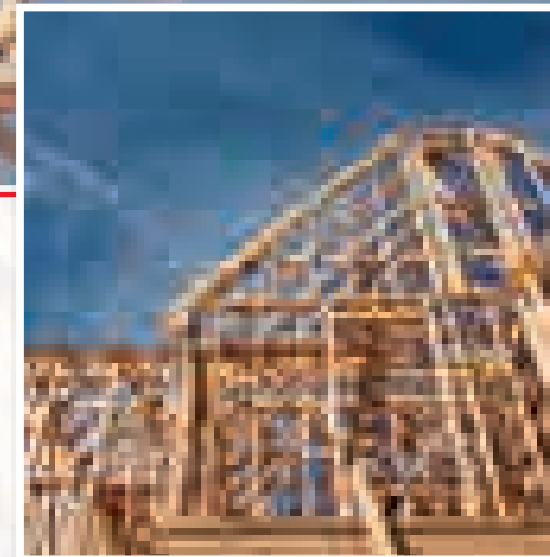
## IMPREGNATION PRIMER W<sup>218</sup>

- Preventive against blue stain and red.
- Aqueous.

## IMPREGNATION PRIMER L<sup>118</sup>

- Transparent impregnation and primer.
- Solvent-based.

- Primer for outdoors.
- Suitable for any wooden constructions outdoors, wooden cladding, windows, window shutters, garden houses, timber framing, garden furniture, balconies, truss, doors garage doors, etc.
- Available in containers of 0.75 liters, 2.5 liters and 5 liters.
- 1 liter is enough for approximately 8 – 12 m<sup>2</sup> per application. Rough-sawn or corrugated wood can increase consumption by a factor of 2 or 3.





# WOOD-PLASTIC-COMPOSITE

## WPC-CLEANER

- Environmentally friendly cleaning concentrate for basic cleaning of WPC (Wood-Plastic-Composites), as well as Resysta and synthetic rattan surfaces.
- 1 liter is enough for approximately 12 – 65 m<sup>2</sup> depending on degree of soiling and dilution.

## WPC-IMPREGNATION

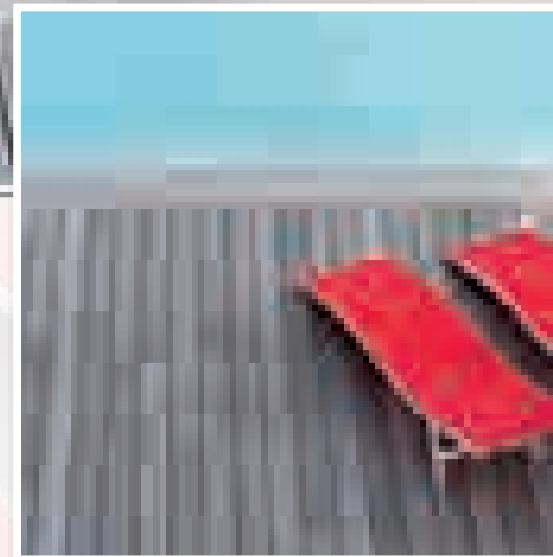
- Open-pore impregnates WPC surfaces and renders them weatherproof and resistant to UV-rays.
- 1 liter is enough for approximately 10 – 20 m<sup>2</sup> depending on surface characteristics. Corrugated surfaces can increase consumption by a factor of 2 or 3.

## WPC-STAIN REMOVER SPRAY

- Combination of remover for glue, stains and dirt.
- Suitable for WPC (Wood-Plastic-Composites), sealed parquet, laminate, stone floors, elastic floor covering (PVC, rubber, CV), desks, built-in wardrobes, plastic surfaces such as countertops, etc.

## WPC-INTENSIVE CLEANER

- Special detergent for WPC (Wood-Plastic-Composites) such as Resysta and synthetic rattan surfaces.
- 1 liter is enough for approximately 10 – 50 m<sup>2</sup>, depending on degree of soiling and dilution.





# CLEAN & CARE

## PLASTIC CLEANER

- Cleaning and preserving of plastic furniture, synthetic rattan furniture and other plastic surfaces indoors and outdoors.

## TEXTILE CLEANER

- Removes stains, coating, dirt and bird droppings from natural and synthetic fiber such as polyacrylic, Dralon, linen, cotton, polyester and PVC-fibers.

## TEXTILE IMPREGNATION

- Protects natural and synthetic materials such as polyacrylic, Dralon, linen, cotton, polyester and PVC-fibers against weather influences.



## GARDEN WOOD CLEANER

- For cleaning atmospheric soiling, algae, graying, grease and oil.
- 1 liter is enough for approximately 15 – 75 m<sup>2</sup> depending on degree of soiling and dilution.

## BAMBOO CLEANER

- Environmentally friendly cleaning concentrate, specially made for bamboo, for cleaning atmospheric soiling, algae, graying, grease, oil and other contaminants.
- 1 liter is enough for approximately 12 m<sup>2</sup> of dirty surface per application. Rough-sawn wood can increase consumption.



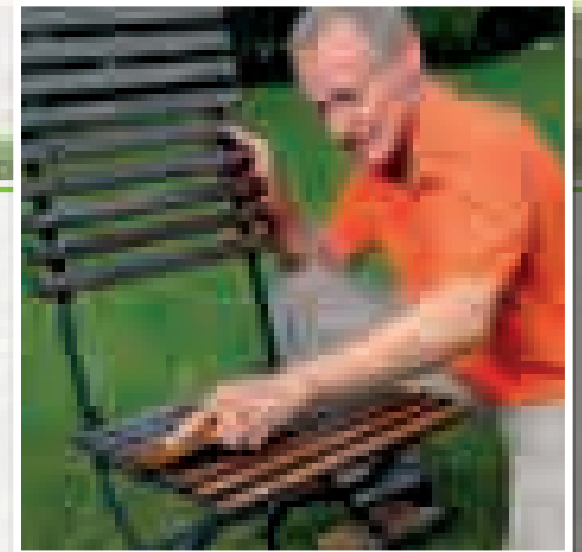
# CLEAN & CARE

## STONE CLEANER

- Intensive cleaner – easy to use.
- Environmentally friendly cleaning concentrate specially made for any kind of stone.
- 1 liter is enough for approximately 10 – 30 m<sup>2</sup> depending on degree of soiling and dilution.

## STONE IMPREGNATION

- Offers protection against moss, algae, lichen.
- Impregnation of absorbent, mineral substrates such as terracotta, exposed aggregate concrete, natural and artificial stone, granite, brick walls, hard stone, stairs and grave stones.



## GREEN GROWTH REMOVER

- Deep penetrating special detergent with independent long-term effectiveness for removing green growth.
- 1 liter is enough for approximately 12 – 15 m<sup>2</sup>.



# MORE FOR OUTDOORS

## BAMBOO CARE OIL

- Protection and preservation of deck boards, especially when made of bamboo, as well as trail markers, fences and privacy screens.
- 1 liter is enough for approximately 8 m<sup>2</sup>. Rough-sawn or corrugated wood can increase consumption by a factor of 2 or 3.

brightbrown

dark brown



## HARDWOOD CARE OIL

- Protection and preservation of hardwood and exotic wood.
- 1 liter is enough for approximately 15 m<sup>2</sup> per application. Rough-sawn or corrugated wood can increase consumption by a factor of 2 or 3.

transparent

red brown

teak

larch



# MORE FOR OUTDOORS

## TEAK-OIL

- Protects and preserves teak wood, as well as domestic and exotic wood with new and refresher coats.
- 1 liter is enough for approximately 25 m<sup>2</sup> per application. Rough-sawn or corrugated wood can increase consumption by a factor of 2 or 3.

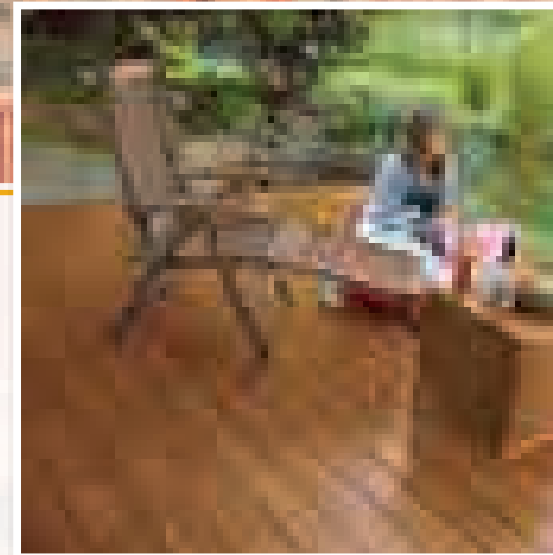
transparent

## UV-PROTECTION OIL

- Transparent wood refinement – long-term protection against graying.
- For any wood outdoors.
- 1 liter is enough for approximately 25 m<sup>2</sup> per application. Rough-sawn or corrugated wood can increase consumption by a factor of 2 or 3.

## LINSEED OIL VARNISH

- Produces an impregnating film and highlights the woodgrain indoors and outdoors.
- 1 liter is enough for approximately 10 m<sup>2</sup> per application. Rough-sawn or corrugated wood can increase consumption by a factor of 2 or 3.





# BEER TABLE BENCH VARNISH

**Beer Table Bench Varnish is used for refurbishing or enhancing beer table benches.**

- Available in four colors.
- Gives themed countertops that little something extra.
- Tested in accordance with EN 71/3 and DIN 53160, thus harmless for food stuff and skin.



beer table bench  
orange

wheat yellow

hops green

malt brown



# HARDWAX OIL evolution

NEW

## Excellent chemical resistance and greatly reduced drying time\*

- For any strained surfaces indoors: wooden floors, cork, OSB-boards, glued wood, counterwtops, furniture, also suitable for damp areas such as bathrooms and kitchens.
- Treated surfaces are highly water-repellent and extremely durable.
- Very well suited for kindergardens, schools, nursing homes, etc.
- 1 liter is enough for approximately 50 m<sup>2</sup> per application. Depending on the kind of wood, sanding and process of application consumption may increase.



matt

satin

glossy

\*By optionally adding a Hardwax Oil Evolution accelerator.



# HARDWAX OIL

## HARDWAX OIL ORIGINAL

**Highly water-repellent and durable**

- For any strained surfaces indoors: wooden floors, toys, cork, OSB-boards, furniture, also suitable for damp areas such as bathrooms and kitchens.
- Available in containers of 0.25 liters, 0.75 liters, 2.5 liters, 10 liters and 30 liters.
- 1 liter is enough for approximately 25 m<sup>2</sup> per application. Depending on the kind of wood, sanding and process of application consumption may increase .

matt

satin

glossy

white

## HARDWAX OIL NATURE

**Solvent-free, open-pore and moisture regulating**

- For floors of any kind indoors.
- Available in containers of 0.75 liters and 2.5 liters.
- 1 Liter is enough for approximately 25 m<sup>2</sup> per application. Depending on the kind of wood, sanding and the process of application consumption may increase.

## HARDWAX OIL EXPRESS

**Highly water-repellent, durable and dries quickly.**

- For any strained surface indoors, wooden floors, toys, cork, OSB-boards, furniture, also suitable for damp areas such as bathrooms and kitchens.
- Available in containers of 0.25 liters, 0.75 liters, 2.5 liters, 10 liters, and 30 liters.
- 1 liter is enough for approximately 25 m<sup>2</sup> per application. Depending on the kind of wood, sanding and process of application consumption may increase.

matt

satin

white





# HARDWAX OIL COLORED

## Original Hardwax Oil now available in color

- Open-pore, moisture regulating for indoors.
- For floors of any kind.
- We recommend a final coat using Hardwax Oil Transparent.
- Available in containers of 0.75 liters and 2.5 liters.
- 1 liter is enough for approximately 25 m<sup>2</sup> per application. Depending on the kind of wood, sanding and process of application consumption may increase.



white

graphite

terra

black

honey

amber

gold effect

silver effekt



# MORE FOR FLOOR

## 2K FLOOR LACQUER

**Retains look and feel of untreated wood.**

**Easy to use and nearly odorless**

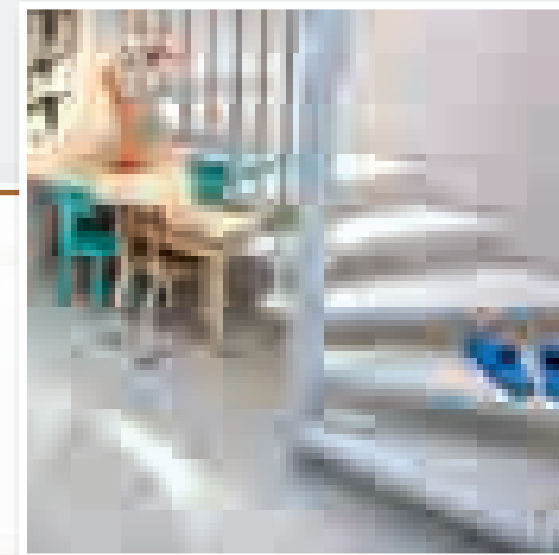
- Highly durable as well as highly resistant to fading and scratching.
- Exposure to sunlight does not cause yellowing of the sealing layer.
- The sealing layer of lacquer remains waterproof even after prolonged exposure to water and it is highly resistant against household chemicals.

## STAIR AND PARQUET VARNISH

- For refurbishing parquet, cork and wooden floors as well as stairs.
- Consumption: When applied by paint scraper, approximately 70 g/m<sup>2</sup> per application. When applied by brush or roller approximately 100 – 120 g/m<sup>2</sup>. Complete coat at least 360 g/m<sup>2</sup>.

## PARQUET CARE MATT

- Protects against fading and scratching and gives the floor a pleasant matt look.





# CHALKED PAINT

## Mineral Paint for Walls and Furniture

### White

white

### Basic

# 01

# 02

# 03

# 04

# 05

# 06

# 07

# 08

# 09

# 10

### Trend

# 21

# 22

# 23

# 24

# 25

# 26

# 27

# 28



- Gives treated surfaces a pretty matt and soft look.
- Permeable to CO2 and solvent-free.
- For refreshing the old or individual refinement of the new. Chalked paint is compatible with various different substrates such as metal, glass, ceramics, reclaimed wood and many more.
- Available in containers of 1 liters, 3 liters and 5 liters.
- 1 liter is enough for approximately 8 – 10 m<sup>2</sup> per application. The exact amount can be determined by testing.



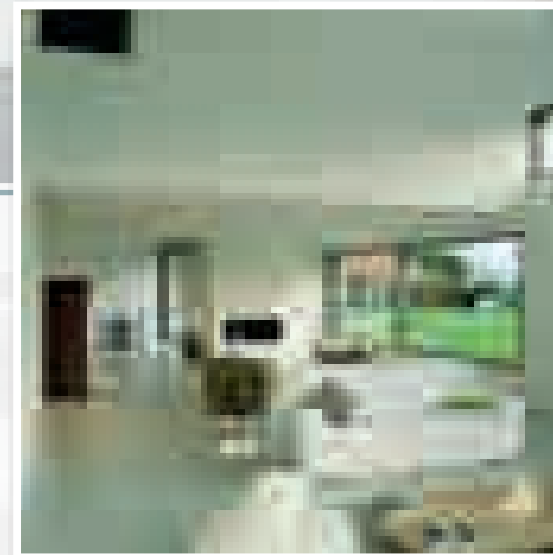
# WALL PAINT

NEW

## Mineral wall paint for indoors

- Satin white.
- Covers well.
- Breathable.
- High content of potassium water glass.

- Suitable for mineral substrates such as gypsum fibreboards or plaster boards, as well as wallpaper or for painting over old coats.
- 1 liter is enough for 6 – 8 m<sup>2</sup> per application. The exact amount can be determined by testing.
- Available in containers of 5 liters and 10 liters.





## VINYL-DAILY CARE

For regular aftercare – just add to mopping water!

- Water-based.
- Silky gloss allround care.
- Easy to use.
- 1 liter is enough for approximately 20 cleaning cycles.

## VINYL-DAILY CLEAN

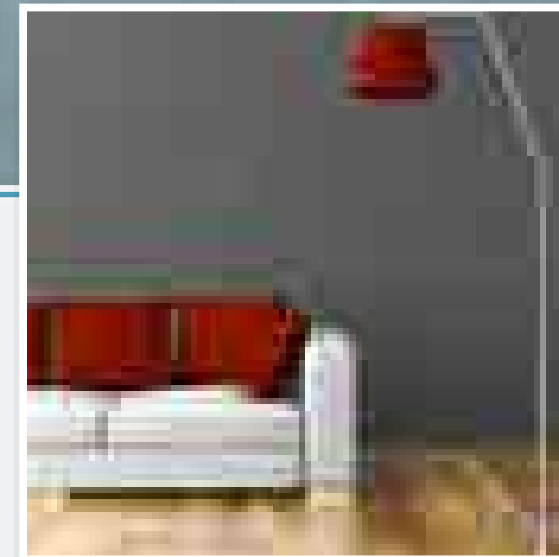
For continued maintenance – just add to mopping water!

- Highly effective yet gentle.
- Intensive cleaning.
- Easy to use.
- 1 Liter is enough for approximately 30 cleaning cycles.

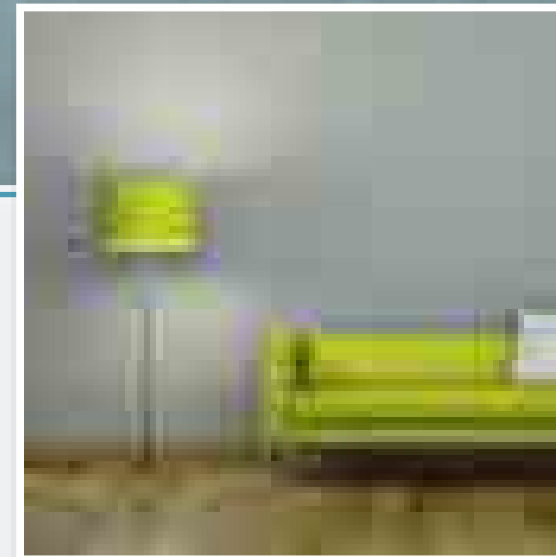
## VINYL-REPAIR

For removing surface damage

- Care and preventive protection against high stress.
- Lessens scratches.
- 1 liter of Vinyl Repair is enough for approximately 50 – 65 m<sup>2</sup> per application.







## VINYL INTENSIVE CLEANER

Stubborn soilage removal.

- Removes grease, oil and wax.
- Intensive cleaning and care.
- Highly effective yet gentle.
- 1 liter of undiluted cleaner is enough for approximately 12 – 20 m<sup>2</sup> depending degree of soiling and dilution.

## VINYL-REFRESHER

For renewal / full care after intensive cleaning

- 1 liter is enough for approximately 60 – 70 m<sup>2</sup> per application.

## VINYL WAX CARE

Preventive care and protection against high stress.

- Anti-static and anti-slip.
- Refines the surface.
- 1 liter is enough for approximately 80 – 100 m<sup>2</sup> per application.



# TRANSPARENT DECO WAX

## Professional quality

- Open-pore, abrasion-resistant and steam permeable for indoors.
- Especially suitable for wall and ceiling cladding, wooden floors, toys, doors, furniture and also damp areas such as bathrooms and kitchens.
- Enhances the natural woodgrain.
- Available in containers of 0.25 liters, 0.75 liters and 2.5 liters.
- 1 liter is enough for approximately 25 m<sup>2</sup> per application. Corrugated wood can increase consumption by a factor of 2 or 3.



transparent

beech tree

cognac

oak antique

white

pigeon blue

cherry

walnut

birch tree

gold maple

mahogany

ebony

savanna

oak

patinagray

granitegrey

steel grey

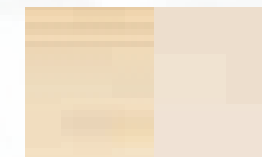
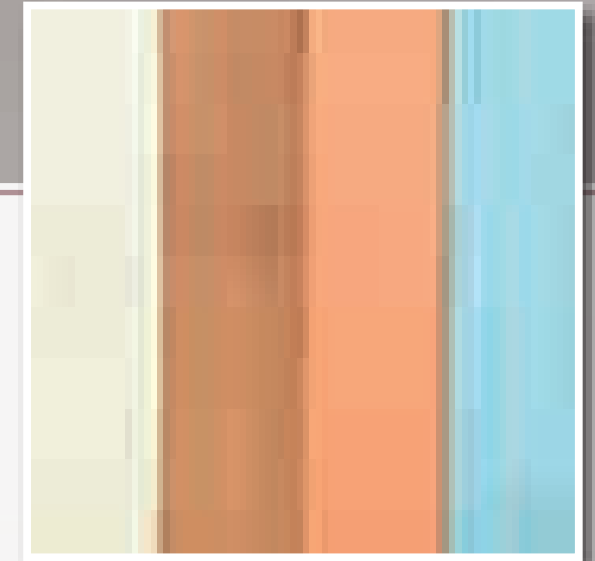
silk grey



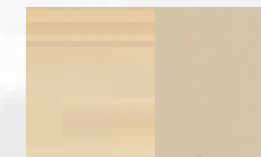
# CREATIVE DECO WAX

## Versatile, pastel coats

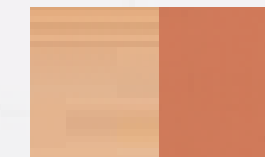
- Transparent or covering: One coat provides a transparent, matt surface. A second coat produces a covering, slightly glossy surface.
- Especially well suited for walls, ceilings, playsets, doors, bars, beams and also for chipboard and MDF.
- A moisture regulating surface product.
- Available in containers of 0.25 liters, 0.75 liters and 2.5 liters.
- 1 liter is enough for approximately 25 m<sup>2</sup> per application. Corrugated wood can increase consumption by a factor of 2 or 3.



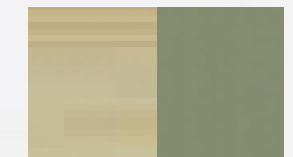
snow  
transparent/covering



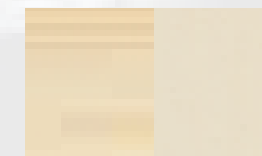
pebble  
transparent/covering



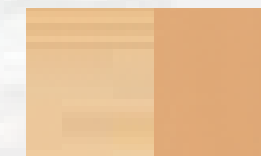
coral  
transparent/covering



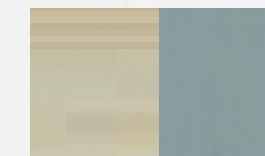
bamboo  
transparent/covering



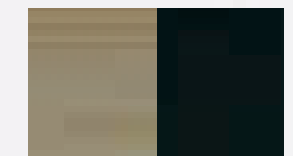
silk  
transparent/covering



sands  
transparent/covering



fjord  
transparent/covering

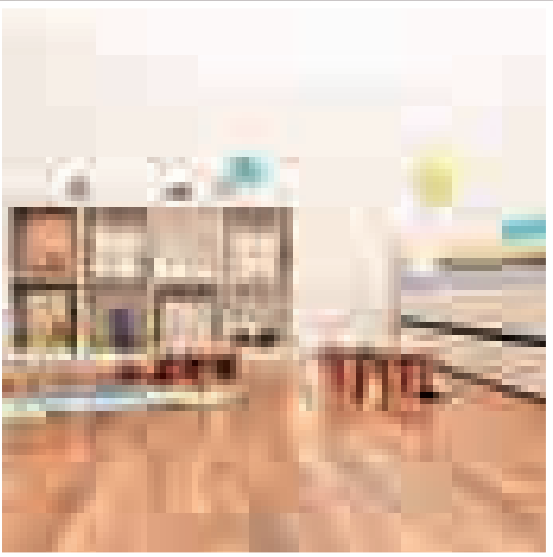


black  
transparent/covering



# WOOD WAX W

Varnish for living spaces  
durable UV and surface-protection



- Solvent-free.
- Open-pore.
- Breathable wax coat.
- Available in containers of 0.75 liters, 2.5 liters, 10 liters and 30 liters.
- 1 liter is enough for approximately 15 m<sup>2</sup> of first coats. Rough-sawn or corrugated wood can increase consumption by a factor of 2 or 3.

transparent

stone pine

oak mittel / hemlock

walnut

antique white

oak light

cedar

rustic



# NATURAL COLOR OIL



## Solvent-free Natural Color Oil paints, preducts and preserves

- Solvent-free.
- Moisture regulating.
- Highly flexible single coat paint.
- Available in containers of 0.75 liters, 2.5 liters, 10 liters and 30 liters.
- 1 liter is enough for approximately 20 m<sup>2</sup> per application, depending on the kind of wood and surface characteristics. Rough-sawn or corrugated wood can increase consumption by a factor of 2 or 3.

transparent	silver gray	rapeseed yellow	petrol blue
chalky white	oak light	poppy red	merbau
larch	bamboo yellow limba	crystal blue	graphite black
oak dark	meranti-teak	pastel green	



# WOOD VARNISH

## Versatile Wood Varnish

- For any wood indoors such as windows, timber framing, doors, cladding, furniture, children's toys and balconies.
- Solvent-free, based on natural oils.
- Available in containers of 0.75 liters, 2.5 liters, 10 liters and 30 liters.
- 1 liter is enough for approximately 12 – 15 m<sup>2</sup> per application. Depending on the kind of wood, sanding and process of application consumption may increase.
- Also suitable for outdoors.



### Varnishing Colors

transparent	cedar
glaze white	walnut
stone pine	rustic rosewood
beech tree	diamond red
oak	nordic pine

### Covering Colors

opaque white	irish green
light grey	maize yellow
old grey	red brown
drift wood	sepia brown
pigeon blue	ebony



# FURNITURE AND MORE

## COUNTERTOP OIL

- Long-term protection against dirt and moisture.
- 1 liter is enough for approximately 15 m<sup>2</sup> per application. Depending on the kind of wood, sanding and process of application consumption may increase.

transparent

white

## ANTIQUE WAX

- Restoration, protection and preservation of antique furniture, carvings, frames.
- 1 liter is enough for approximately 15 – 20 m<sup>2</sup> per application. Depending on the kind of wood and surface.

transparent

pine

light brown

dark brown

## CLEAR WAX

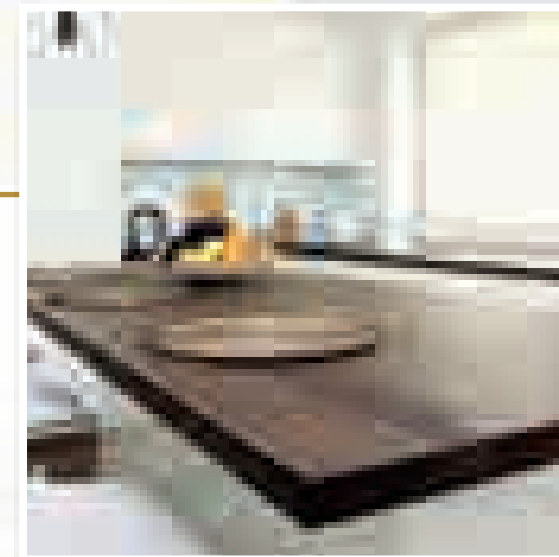
- Enhances the natural woodgrain.
- 1 liter is enough for approximately 25 m<sup>2</sup> per application. Depending on the kind of wood, sanding and process of application, consumption may increase.

## BEESWAX BALM

- Anti-static and offers protection against moisture and soiling.
- 1 liter is enough for approximately 15 m<sup>2</sup> per application, depending on the kind of wood and surface.

## FURNITURE OIL

- Preserves and predects furniture surfaces made from hardwood or softwood.





# CLEAN & CARE INDOORS

## WAX CARE

- Anti-static and anti-slip for oiled or waxed cork or wooden floors.
- 1 liter is enough for approximately 80 – 100 m<sup>2</sup> per application.

## LAMINATE FLOOR CLEANER

- Cleaning and preserving of laminate, linoleum, UV-oil treated or varnished surfaces.

## INTENSIVE CLEANER

- Cleans waxed or oiled floors prior to a refinish and removes any glossy finish, polymer layers, waxes, oil films and other contaminants.

## WOOD FLOOR SOAP

- Lipid replenishing cleaning.
- For leached, waxed or oiled hardwood and softwood surfaces.

## PARQUET CLEANER

- Intensive cleaning and maintenance of parquet floors.

## UNIVERSAL CLEANER

- Intensive cleaning for any water-resistant surfaces such as tiles, tiling, ceramics, glass, windows, metal parts, plastic surfaces, synthetic and genuine leather, lighting fixtures, garden furniture and cars.





# CLEAN & CARE INDOORS

## CARE OIL

- For oiled wood or cork indoors. Care for all known oil systems.

transparent

white

## WAX CARE

- Wax Care is anti-static, anti-slip and dirt-repellent for any strained cork or wooden surfaces indoors, such as linoleum, PVC, plastic cladding, laminate, stone, wood, marble, terracotta and ceramic floor tiles.

## PARQUET CARE

- Environmentally friendly full care specially for parquet floors.

## CORK FLOOR CARE

- Full care of any cork floors with silky gloss.

## LAMINATE FLOOR CARE

- Full care for laminate, linoleum, UV oiled or varnished surfaces.





# MORE

## PAINT STRIPPER

- Intensively and precisely removes old layers of paint and varnish from furniture, windows and tongue and groove boards.
- 1 liter is enough for approximately 1.5 – 3 m<sup>2</sup> depending on varnish, lacquer and adhesive.

## BRUSH CLEANER/THINNER

- Combats animal pests such as woodworm, house longhorns and powderpost beetles while also predefecting against new infestation indoors and outdoors.
- Consumption depends on need and use.

## WOODWORM TREATMENT

- Combats animal pests such as woodworm, house longhorns and powderpost beetles while also predefecting against new infestation indoors and outdoors.
- 1 liter is enough for approximately 3 – 4 m<sup>2</sup> per application.

## INSULATING PRIMER

- Prevents seepage of wood and cork components indoors and outdoors.
- 1 liter is enough for approximately 12 m<sup>2</sup> per application. Rough-sawn or corrugated wood can increase consumption by a factor of 2.





# CARE SETS

FASSADE Our Care Set provides all the exclusive care products you need for optimal preservation of wooden surfaces.

NEW



Choose from eight distinct standard sets for different areas, decks, WPC, floors, facades and counterops or compile your very own individual Care Set.





# BIO-SERIES

## Take note of our Bio Series

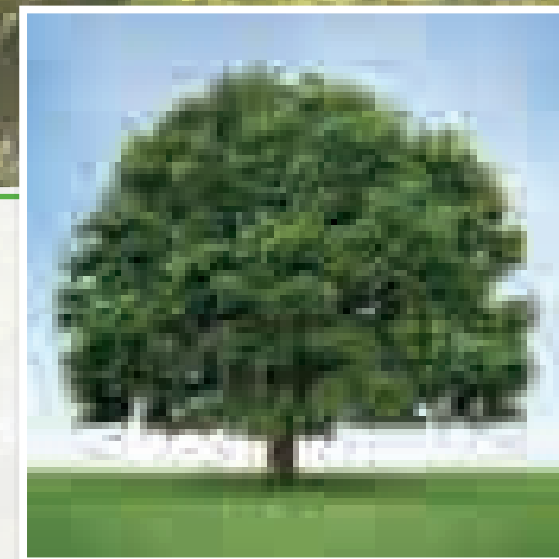
- Comprehensive palette of strictly organically manufactured wood preservers
- Solvent-free and nearly odorless
- Sustainability for your wood



Tested quality  
Made from natural resources

- Bio Wall Paint
- Bio Garden and Playground Lacquer
- Bio Hardwood Deck Oil
- Bio Softwood Deck Oil
- Bio Facade Oil
- Bio Wood Care Oil
- Bio Teak and Garden Furniture Refresher
- Bio Teak and Garden Furniture Cleaner
- Bio Teak and Garden Furniture Oil
- Bio Brush Cleaner
- Bio Furniture and Toy Paint
- Bio Furniture and Toy Varnish

- Bio Hard Wax Oil
- Bio Renaissance Wax
- Bio Countertop Oil
- Bio Furniture Oil
- Bio Wax Tincture
- Bio Floor Care Oil
- Bio Floor Care Cream
- Bio Wood Soap





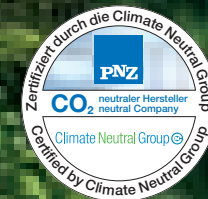
Start with us  
and our Private Lable concept  
towards a better future

## Nature itself is our inspiration

---

All of our products are produced in such a way as to conserve resources and are made from high-quality, renewable natural resources such as beeswax or vegetable wax, as well as oils from controlled cultivation.

- All of our recipes exclude carcinogenics and solvents containing toxic aromatic compounds.
- High-Solid products with a solids content of up to 100% facilitate maximum performance and environmental safety.
- Our products are produced in a highly supervised process in accordance with ISO 9001 and ISO 14001.







# Any questions?

---



**PNZ**

**PNZ-Produkte GmbH**  
Eichstätter Straße 2-4a  
D-85110 Kipfenberg

fon +49 (0) 8465 17380  
fax +49 (0) 8465 3616  
e-mail [info@pnz.de](mailto:info@pnz.de)  
[www.pnz.de](http://www.pnz.de)