



POHL

Kompetenz aus Tradition

POHL FACADES: SYSTEM. VARIETY. AESTHETICS.
Innovative solutions in construction and design.



*“Design and architecture
are some of the most
beautiful ways to express
individual personality.”*

Heinrich R. Pohl, General Manager of the POHL Group



Delivering quality and innovation – Generation after generation

Founded in 1856 as a wheelwright business, the POHL Group can reminisce on over 150 years' worth of tradition. Within five generations, the family-run business has expanded all over the world and has over 600 employees located at their six production facilities both nationally and overseas.

As an international specialist in metal facades, we are the future in building envelopes, combining chic design with sophisticated technology and always aiming to set new standards. Combining form and function to create a harmonious whole takes centre stage in all our endeavours.

Our goals are to give every structure its own personality, fulfil your expectations by making your visions a reality, and make architecture come alive.



Company Headquarters, Cologne



Project Management, Cologne



Sheet Metal Processing –

A fusion of technology and solid craftsmanship

From lasering, punching and milling, to edging and rolling, and even welding and bonding – our state-of-the-art machinery means we have all the means necessary to produce attractive, chic facades to suit you.

Additionally, we offer various surface finishes and treatments, among others rolling, vibration and cross-grinding, PVD and PU coating, wet lacquering, anodised or electrochemical polishing, and burnishing – and all under one roof.

We couldn't offer such high-quality services without our competent employees. They follow the construction project all the way from the initial idea, through the entire planning and production process, up to completing the project on-site.

Perfection combined with technical know-how and solutions that are both visually alluring and functionally inspiring – that's what POHL represents.



Production, Cologne



POHL Facades –

It all starts with an idea

We aim to merge your vision together with our expertise and first-class technical facilities. All around the world top architects trust in us to lift their drawings off the page and into reality. We see buildings as so much more than just functional living spaces – they are expressions of individual personality.

Project: Canary Wharf, London, GB
Barclays Wealth Management
State Street Global Advisors Ltd
S&P Global Platts
Citibank
Clifford Chance
East Wintergarden
JP Morgan
Morgan Stanley

Facade system: POHL special construction

Material: Stainless steel and aluminum



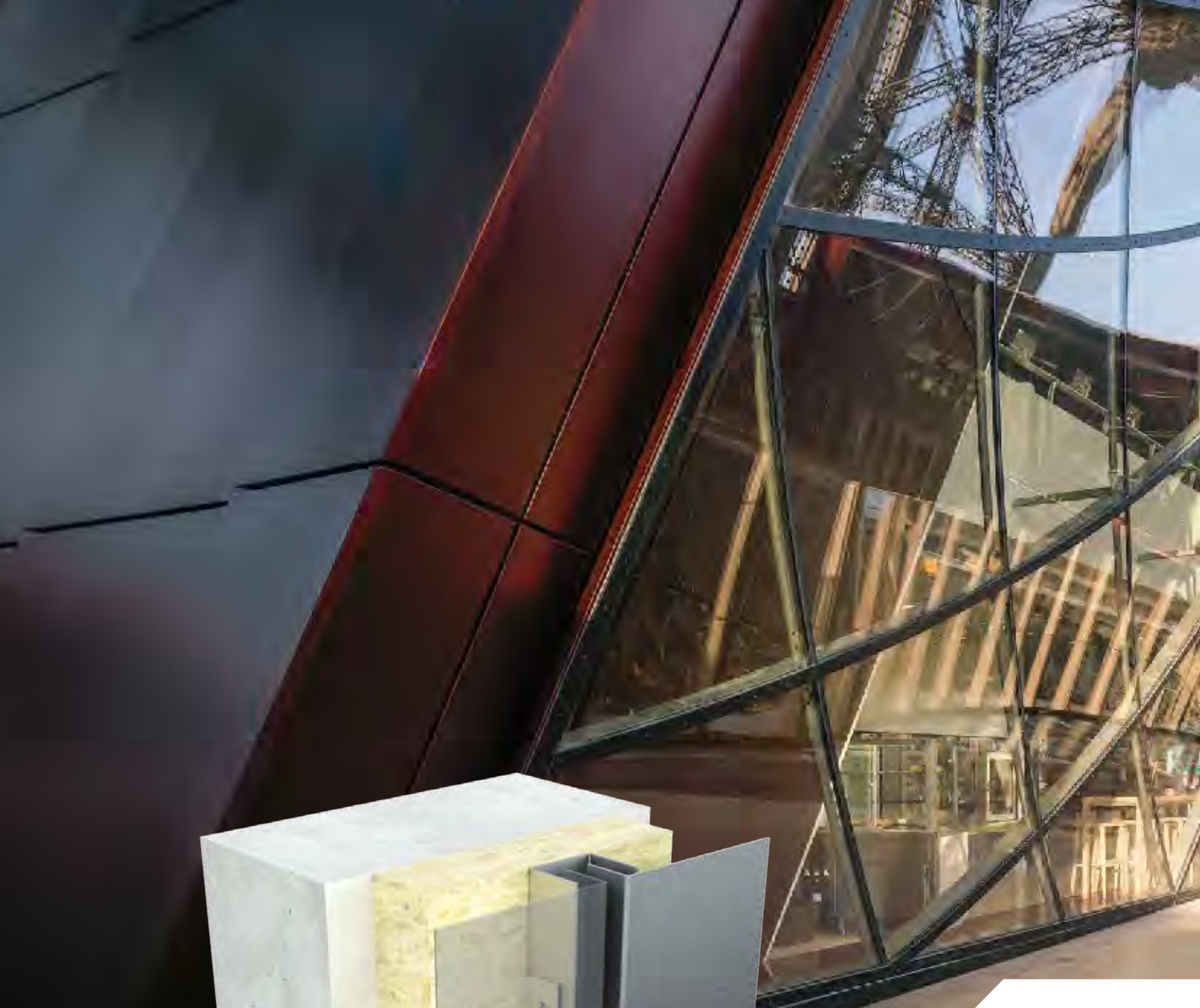
Project: Heron Tower, London, GB
Architect: Kohn Pederson Fox Associates
Facade system: POHL special construction
Material: Stainless steel



POHL System Facades – Shape based upon aesthetics

Facades are more than just building envelopes. Rather, they're your building's business card.

POHL facades adorn internationally prestigious buildings and structures designed by top architects. Not only do our solutions for ventilated and insulated curtain walls fulfil the highest aesthetic demands, but they also meet the continually increasing expectations for cutting edge concepts of climate control, making a valuable contribution to future generations.





Project: The Eiffel Tower, Paris, France

Architect: Agence Moatti-Rivière

Facade system: POHL Europanel®

Material: Aluminum

POHL Europanel® – Elegance

When it comes to a clean, vertical joint pattern with soft shading and a cleverly-devised drainage system, it's a matter for our large-sized POHL Europanel® panels with their naturalistic serenity.

The striking feature of the mounted POHL facade systems with their concealed pin hangings is the integrated, equally concealed drainage profiles. The canted panels which are rounded on all sides form a ventilated facade system which is particularly elegant in character.

The both aesthetic and functional solution also creates a classy feel as interior cladding.

Project: Hernalser, Vienna, Austria

Architect: Pool Architektur ZT GmbH

Facade system: POHL Europanel® and POHL Europlate®

Material: Aluminum





POHL Europlate® – Striking

If sheets without bevelled edges, with concealed brackets on the reverse side, have been affixed to holding tracks that are versatile in use, a compact, intelligent facade system has been achieved.

The hard edges, sharp contours and shading of this unique facade solution make a striking impression whilst retaining a sophisticated look.

Through their intelligent profiles, POHL Europlate® facades handle drainage, providing an easy, rapid, and cost-effective solution for your metal facade without having to install additional seals.

Project: caesar Research Center, Bonn, Germany
Architect: BMBW Architekten BDA + Partner
Facade system: POHL Ecopanel®
Material: Stainless steel





POHL Ecopanel® – Economical

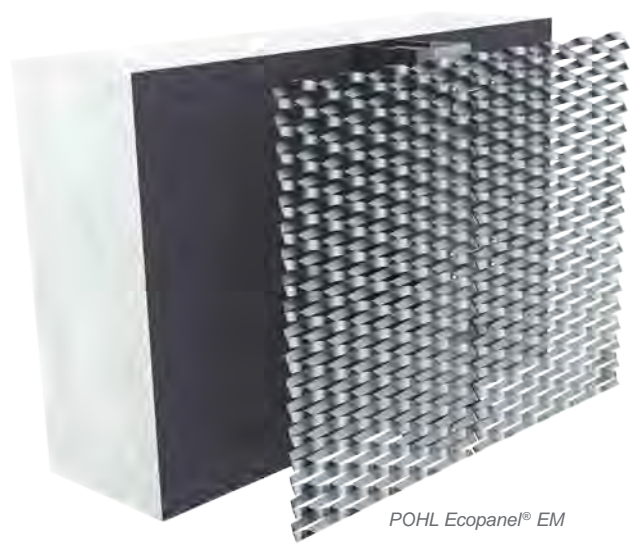
POHL Ecopanel® plank wall panels have multiple bevelled edges and come in a variety of materials and surfaces. These panels are an economical facade solution from POHL, which simultaneously meet all the quality standards of a ventilated curtain wall.

The horizontal lines of POHL Ecopanel® panels give texture to the facade or interior wall and are available in aluminum, stainless steel, zinc, as well as various surfaces, decors and almost any possible color. The panels can be mounted onto variable holding tracks easily and rapidly, meaning this facade system has a wide range of uses and can be adapted to any system depth.

Project: Fa. LEMKEN, Alpen, Germany
Architect: STRUCTURELAB GmbH
Facade system: POHL Ecopanel® EM
Material: Aluminum



POHL Europanel® EM




POHL Ecopanel® EM



POHL Europanel® EM and POHL Ecopanel® EM – Symmetry

POHL's expanded metals are the system solution for individual and innovative architecture. Breathable and translucent gaps are evenly spaced to create a symmetrical look. Different types of meshes and surfaces mean the panels have countless potential uses, raising the bar for aesthetics and design.


As it is both durable and stable, the expanded metal mesh is suitable for use not only as an architectural feature, but also as closed or open building envelopes, interior cladding, ceiling cladding, sun protection and a privacy screen, either with or without insulation. The uses of expanded metal are almost unlimited, whether in the form of a standard mesh or individually tailored to the customer's requirements.



POHL special construction – Creating identity

Whether you'd prefer to go back to basics and opt for a sleek and modern look, or whether you want a building envelope which is equally durable and environmentally friendly, or whether you desire something extraordinary, which epitomises an exceptional, associative or simply unique facade solution - we'll make your building the star of the street.

The key to individuality in architecture which paves the way for new trends is extravagance. Especially in the case of individual construction projects requiring high levels of creativity, you are in the very best hands with our team of experts. We develop your ideas together, from the design to the finished profile.



Project: Thomas More Square, London, GB
Architect: BDP Architects (London)
Facade system: POHL special construction
Material: Corten steel
Surface: POHL Phoenix

Project: Ashgabat International Airport, Ashgabat, Turkmenistan
Architect: Polimeks
Facade system: POHL Europanel®
Material: Coated aluminum





Combine your ideas –
With our expertise

Our work is based on expertise through tradition – the knowledge of our employees has developed over years of work and been passed down through generations. Together with innovation and creativity, our expertise also comprises the continual development of our production techniques and products using state-of-the-art machines to ensure the highest accuracy levels. By working together, we provide the most sophisticated solutions and advise on every phase of the project with technical excellence.

Challenge us!

Engineering –

We have our finger on the pulse

At POHL, design and architecture go hand in hand with environmentally friendly construction and all ideas for facade solutions are carefully considered. We strive for ecologically sustainable solutions in terms of materials – aluminum is the basis for multiple creative possibilities, as not only is it durable, but it's also light, sustainable and can withstand corrosion. With little effort, it can be recycled almost without any losses.

At the same time, a facade also reflects business culture. Every POHL facade shows how we identify with architectural concepts and how we respect environmental efficiency.



Project: Campus SFR, Paris, France

Architect: Jean-Paul Viguier et Associés Architecture et Urbanisme

Facade system: POHL special construction

Material: POHL Duranize® Natural, POHL Duranize® Champagne






Project: Merchandise Mart, Chicago, USA

Architect: A+I Architecture + Information

Material: POHL Bronze Light

Surface: Vibration Finish



POHL Surface Designs – Timeless elegance

Continual developments together with innovation form the basis for achieving maximum individuality and creative freedom. Surfaces of a very special kind take centre stage, fusing zeitgeist with impressive visuals and sophisticated technology.

From aluminum to steel and stainless steel, all the way to copper and zinc – POHL offers a wide range of materials in various finishes, and all of an outstanding quality. What's more, the extraordinary POHL designs are characterised by particular grind cuts, with vibrant, exquisitely-structured, subtle, elegant or extravagant appearances. Every cut can be applied to a variety of uncoated surfaces and combined with almost any color, adding an entirely new value, whether it is to facades or interior design.

Project: Anenhütte, Blatten, Schweiz

Owner: Peter Tscherrigg

Facade system: POHL special construction (metalfoam AFS® MDT S4)

Material: Aluminum



Aluminum Foam – Innovative and individual

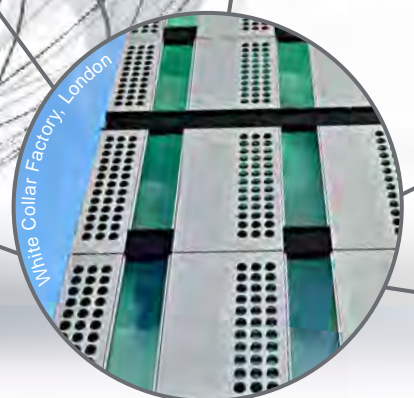
Aluminum sandwich panels with an aluminum-metal foam core are yet another distinctive facade solution from POHL, combining sophisticated technology with eye-catching visuals.

Products made from metal foam are typically employed as structural material in the building of machines and vehicles. Our single-material aluminium foam sandwich system is highly stable, weighs little and has an alluring porous structure, therefore providing individual and unique architectural possibilities that are completely new in facade construction through subsequent thermal processing.



Aluminum one-component sandwich system (top left)
AFS® MDT S4 (top right), Production, Cologne (bottom)

More architectural highlights –
Around the globe





Headquarter
Christian Pohl GmbH

Robert-Bosch-Str. 6
50769 Cologne
Germany

Phone: +49 221 70911-0
Fax: +49 221 70891-23

info@pohl-facades.com
www.pohl-facades.com

pohltec fassaden GmbH

Leitenweg 7
89312 Günzburg
Germany

Phone: +49 8221 2066-0
Fax: +49 8221 2066-399

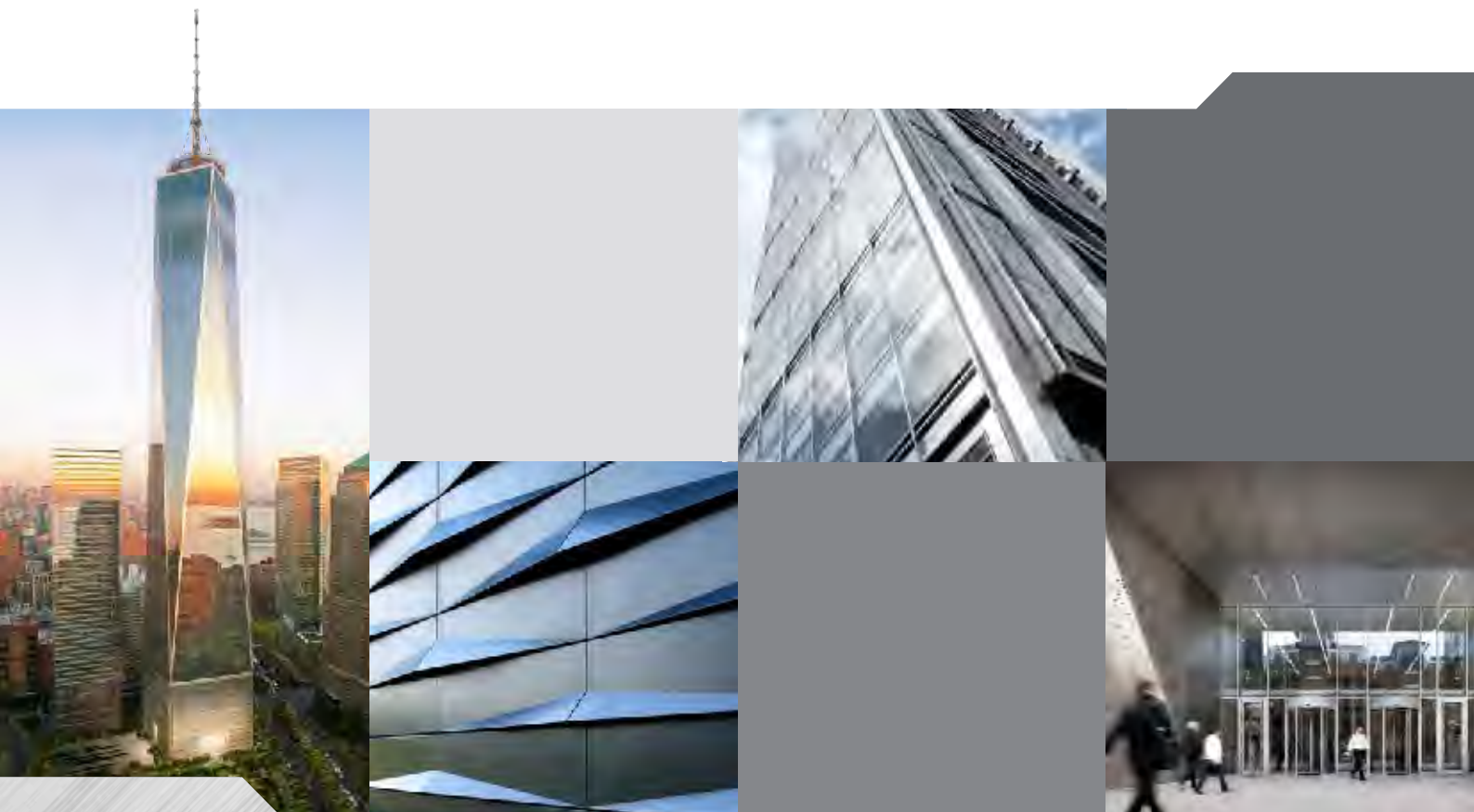
info@pohl-facades.com
www.pohl-facades.com

Pohl Inc. of America

6161 West Double Eagle Circle
West Valley City, UT 84118
USA

Phone: +1 801 988-1305
Fax: +1 801 988-1310

info@pohl-facades.com
www.pohl-facades.com



POHL-Group of Companies